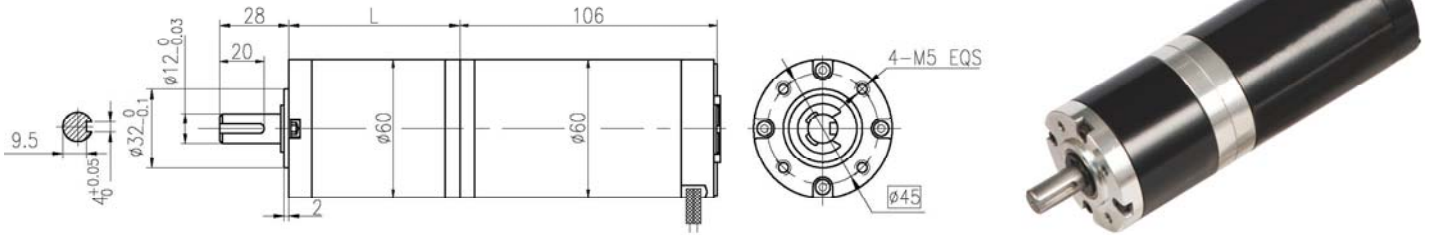


永磁直流行星齿轮电机 (内齿圈材质: 金属)
PM DC Planetary Gear Motor (Ring Gear Material: Metal)

60JXE300K/60ZY105

Φ60 行星减速器 允许转矩范围: 2N.m~30N.m
60mm Planetary Gearbox
Permissible Load Range: 2N.m~30N.m

● 外形和安装尺寸 Dimensions



● 电动机主要技术参数 Motor Technical Data

电机型号 TYPE	额定电压 Rated voltage VDC	空载转速 No-load speed r/min	空载电流 No-load current A	额定转速 Rated speed r/min	额定转矩 Rated torque mN.m	输出功率 Output power W	额定电流 Rated current A	堵转转矩 Stall torque N.m	堵转电流 Stall current A
60ZY105-2420	24	2000	0.32	1550	125	20	1.6	0.55	6.0
60ZY105-2430	24	3000	0.40	2500	120	30	2.2	0.72	10.8

● 齿轮减速电机主要技术参数 Gear Motor Technical Data

配置 60ZY105-2420 直流电机 (60ZY105-2420 DC Motor)

减速比 Reduction ratio	3.6	4.25	13	15	18	23	47	55	65	77	96	121	153	187	220	260	307	409
减速级数 Number of gear trains	1	1	2	2	2	2	3	3	3	3	3	3	4	4	4	4	4	4
减速器长度(L) Length(L) mm	37.8	37.8	49.5	49.5	49.5	49.5	60.8	60.8	60.8	60.8	60.8	60.8	71.9	71.9	71.9	71.9	71.9	71.9
空载转速 No-load speed r/min	556	471	154	133	111	87	43	36	31	26	21	17	13	11	9.1	7.7	6.5	4.9
额定转速 Rated speed r/min	431	365	119	103	86	67	33	28	24	20	16	13	10	8.3	7.0	6.0	5.0	3.8
额定转矩 Rated torque N.m	0.41	0.48	1.5	1.7	1.8	2.3	4.8	5.6	5.9	7.0	8.8	11	14	17	18	21	25	30
最大瞬时允许负载 Max. permissible load in a short time N.m	6	6	36	36	36	36	72	72	72	72	72	72	90	90	90	90	90	90

配置 60ZY105-2430 直流电机 (60ZY105-2430 DC Motor)

减速比 Reduction ratio	3.6	4.25	13	15	18	23	47	55	65	77	96	121	153	187	220	260	307	409
减速级数 Number of gear trains	1	1	2	2	2	2	3	3	3	3	3	3	4	4	4	4	4	4
减速器长度(L) Length(L) mm	37.8	37.8	49.5	49.5	49.5	49.5	60.8	60.8	60.8	60.8	60.8	60.8	71.9	71.9	71.9	71.9	71.9	71.9
空载转速 No-load speed r/min	833	706	231	200	167	130	64	55	46	39	31	25	20	16	14	12	9.8	7.3
额定转速 Rated speed r/min	694	588	192	167	139	109	53	45	38	32	26	21	16	13	11	9.6	8.1	6.1
额定转矩 Rated torque N.m	0.39	0.46	1.3	1.5	1.7	2.2	4.1	4.8	5.7	6.7	8.4	11	12	15	17	20	24	30
最大瞬时允许负载 Max. permissible load in a short time N.m	6	6	36	36	36	36	72	72	72	72	72	72	90	90	90	90	90	90

● 电动机特性图 Motor Characteristic Figure

