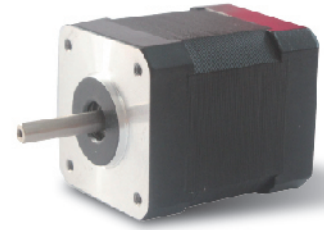


42 SERIES BLDC Motor



GENERAL SPECIFICATION

Winding type: Star
Hall effect angle: 120 degree electrical angle
Shaft run out: 0.025mm
Insulation Class: Class B
Dielectric strength: 500VDC for one minute
Ambient temperature: -20—+40 °C

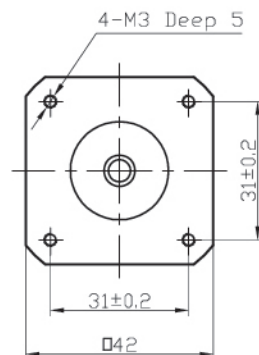
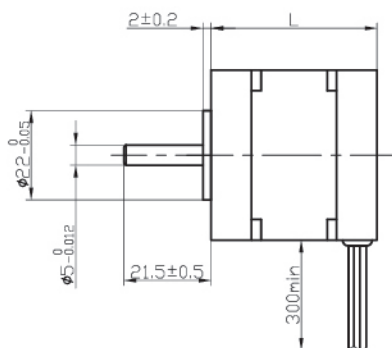
WIRE DIAGRAM

Lead No.	Lead Color	Lead Gauge	Function
1	RED	20AWG UL1569	Phase U
2	YEL		Phase V
3	BLA		Phase W
4	RED	26AWG UL1569	+5V
5	BLU		Hall A
5	GRE		Hall B
7	WHI		Hall C
8	BLA		GND

ELECTRICAL SPECIFICATION

Model		42DMW41-2440	42DMW51-2440	42DMW61-2440	42DMW81-2440	42DMW101-2440
Voltage	V	24				
Number of poles		8				
Rated power	W	25	40	50	75	100
No load speed	rpm	5000	5000	5000	5000	5000
Rated torque	Nm	0.063	0.096	0.125	0.18	0.25
Rated Speed	rpm	4000	4000	4000	4000	4000
Rated Current	A	1.7	2.4	3.5	4.6	6
Torque(max)	Nm	0.19	0.23	0.38	0.57	0.75
Back-EMF constant	V/Krpm	3.13	3.13	3.15	3.16	3.17
Torque Constant	Nm/A	0.039	0.04	0.04	0.05	0.05
Resistance	ohm	1.5	1	0.74	0.56	0.4
Weight	Kg	0.3	0.4	0.5	0.7	0.9
Length	mm	41	51	61	81	101

DIMENSIONS



The diameter of axle (max): 8mm

Connection mode

