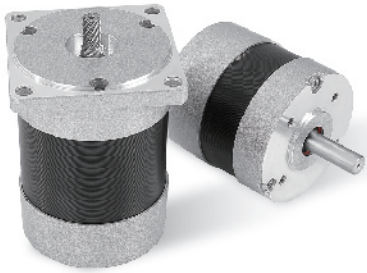


57 SERIES BLDC Motor(High Torque)



GENERAL SPECIFICATION

| |
|--|
| Winding type: Star |
| Hall effect angle: 120 degree electrical angle |
| Shaft run out: 0.025mm |
| Insulation Class: Class B |
| Dielectric strength:500VDC for one minute |
| Ambient temperature: -20—+40 °C |

WIRE DIAGRAM

| Lead No. | Lead Color | Lead Gauge | Function |
|----------|------------|--------------|----------|
| 1 | RED | 18AWG UL1569 | Phase U |
| 2 | YEL | | Phase V |
| 3 | BLA | | Phase W |
| 4 | RED | 26AWG UL1569 | +5V |
| 5 | BLU | | Hall A |
| 5 | GRE | | Hall B |
| 7 | WHI | | Hall C |
| 8 | BLA | | GND |

ELECTRICAL SPECIFICATION

| Model | | 57DMWH55-3640 | 57DMWH75-3640 | 57DMWH95-3640 | 57DMWH115-3640 |
|-------------------|--------|---------------|---------------|---------------|----------------|
| Voltage | V | 36 | | | |
| Number of poles | | 4 | | | |
| Rated power | W | 60 | 75 | 180 | 200 |
| No load speed | rpm | 5200 | 5200 | 5200 | 5200 |
| Rated torque | Nm | 0.14 | 0.28 | 0.43 | 0.56 |
| Rated Speed | rpm | 4000 | 4000 | 4000 | 4000 |
| Rated Current | A | 2.2 | 4.5 | 6.8 | 9 |
| Torque(max) | Nm | 0.4 | 0.6 | 0.9 | 1.7 |
| Back-EMF constant | V/Krpm | 4.5 | 4.8 | 4.83 | 4.9 |
| Torque Constant | Nm/A | 0.072 | 0.078 | 0.08 | 0.09 |
| Resistance | ohm | 2 | 0.9 | 0.7 | 0.5 |
| Weight | Kg | 0.5 | 0.8 | 1.1 | 1.5 |
| Length | mm | 55 | 75 | 95 | 115 |

DIMENSIONS

