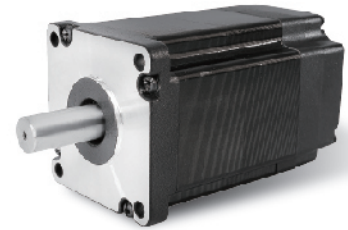


70 SERIES BLDC Motor



GENERAL SPECIFICATION

Winding type: Star
Hall effect angle: 120 degree electrical angle
Shaft run out: 0.025mm
Insulation Class: Class B
Dielectric strength: 500VDC for one minute
Ambient temperature: -20—+40°C

WIRE DIAGRAM

Lead No.	Lead Color	Lead Gauge	Function
1	RED	18AWG UL1569	Phase U
2	YEL		Phase V
3	BLA		Phase W
4	RED	26AWG UL1569	+5V
5	BLU		Hall A
5	GRE		Hall B
7	WHI		Hall C
8	BLA		GND

ELECTRICAL SPECIFICATION

Model		70DMW86-4830	70DMW116-4830	70DMW136-4830
Voltage	V	48		
Number of poles		8		
Rated power	W	200	350	450
No load speed	rpm	3600		
Rated torque	Nm	0.65	1.2	1.5
Rated Speed	rpm	3000	3000	3000
Rated Current	A	5.5	9.7	12.9
Torque(max)	Nm	2.1	3.6	4.5
Back-EMF constant	V/Krpm	7.1	7.3	7.5
Torque Constant	Nm/A	0.095	0.098	0.099
Resistance	ohm	1.2	0.6	0.3
Weight	Kg	1.7	2.2	2.8
Length	mm	86	116	136

DIMENSIONS

