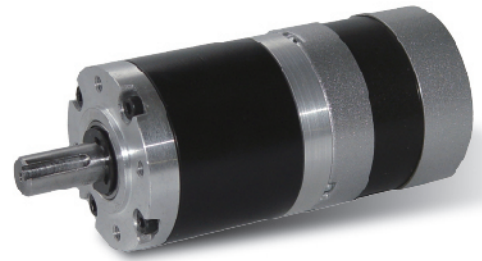


# 56JXE300K/57DMW45

56mm OD Planetary Gearbox,  
Permissible Load Range: 3N.m~30N.m



## BRUSHLESS MOTOR SPECIFICATION

TYPE	Number of poles	Number of phase	Rated voltage	No-load speed	Rated speed	Rated torque	Rated power	Peak torque	Peak current
			VDC	r/min	r/min	mN.m	W	mN.m	A
57DMW45-2420	4	3	24	3000	2000	0.055	12	0.15	2.5

## BRUSHLESS GEAR MOTOR SPECIFICATION

Reduction ratio		13	15	18	23	47	55	65	77	96	121
Number of gear trains		2	2	2	2	3	3	3	3	3	3
Length(L)	mm	49.5	49.5	49.5	49.5	60.8	60.8	60.8	60.8	60.8	60.8
No-load speed	r/min	231	200	167	130	64	55	46	39	31	25
Rated speed	r/min	154	133	111	87	43	36	31	26	21	17
Rated torque	N.m	0.58	0.87	0.80	1.0	1.9	2.2	2.6	3.1	3.9	4.9
Peak torque	N.m	36	36	36	36	72	72	72	72	72	72

## DIMENSIONS

