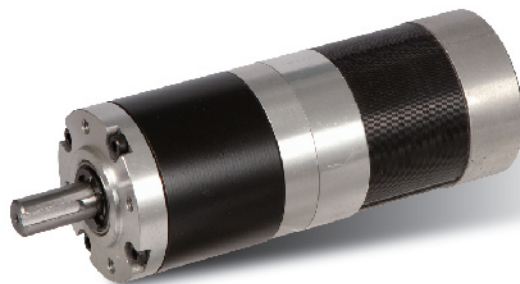


56JXE300K/57DMW75

56mm OD Planetary Gearbox,
Permissible Load Range: 3N.m~30N.m



BRUSHLESS MOTOR SPECIFICATION

TYPE	Number of poles	Number of phase	Rated voltage	No-load speed	Rated speed	Rated torque	Rated power	Peak torque	Peak current
			VDC	r/min	r/min	mN.m	W	mN.m	A
57DMW75-2420	4	3	24	3000	2000	0.22	50	0.66	8

BRUSHLESS GEAR MOTOR SPECIFICATION

Reduction ratio		3.6	4.25	13	15	18	23	47	55	65	77
Number of gear trains		1	1	2	2	2	2	3	3	3	3
Length(L)	mm	37.8	37.8	49.5	49.5	49.5	49.5	60.8	60.8	60.8	60.8
No-load speed	r/min	833	706	231	200	167	130	64	55	46	39
Rated speed	r/min	556	471	154	133	111	87	43	36	31	26
Rated torque	N.m	0.71	0.84	2.3	2.7	3.2	4.1	7.5	8.8	10	12
Peak torque	N.m	9	9	36	36	36	36	72	72	72	72

DIMENSIONS

